



# Schneller, einfacher & effizienter Die grafische Bedienoberfläche **PVGui**

[info@genser.de](mailto:info@genser.de)

**Genser Scientific Instruments**  
Schweinsdorferstraße 38, 91541 Rothenburg/T.  
Germany

**GENSER**<sup>®</sup>  
Scientific Instruments GERMANY



# Inhalt

- ▶ Grafische Bedienoberfläche
- ▶ Messdatenanalyse
- ▶ Gerätebeispiele

# Grafische Benutzeroberfläche PVGui

PVGui V7.6

Set- and actual values

Variables	Actual values	Set values
Dosed steps (d)	0	0
Cycles (b)	1	1
Max. vapor temperature (t)	20 °C	60 °C
Vacuum (v)	966 hPa	200 hPa
Minimal vacuum (Auto) (x)		199 hPa
Product quantity (p)	0 %	100 %
End quantity (e)		0 %
Heating bath temperature (T)	19 °C	0 °C
Rotating flask speed (r)	24 rpm	25 rpm

Graphic

Menu

Settings

Show help

Terminate PVGui

Errors

**Important buttons**

Start Powervap    Activate reflux

Pump out distillate    End procedure

Product dosing 5 sec.    Aerating 1 sec.

Manual VC activated    Activate automatic VC

Console

```

2013-05-04, 19:23:33 1. Welcome
2013-05-04, 19:23:36 2. Emptying of product tube
2013-05-04, 19:23:39 3. Filling of product tube
2013-05-04, 19:23:44 4. Emptying of rotating flask
2013-05-04, 19:23:46 5. Removing of distillate
2013-05-04, 19:23:52 Distillate pumped out or no Distillate removal.
2013-05-04, 19:23:53 6. Pre-heating of bath
2013-05-04, 19:24:30 Background test of the vacuum sensor S1.
2013-05-04, 19:24:35 Background test of the inclinometer S5.
2013-05-04, 19:24:44 Powervap successfully configured.
2013-05-04, 19:24:44 7. Successfully completed
2013-05-04, 19:24:51 Main operating window is open now.

```

Automatic end procedure after:

0 Days 0 Hours 0 Minutes

Set automatic end procedure

Running time:

000 Days, 00 Hours, 01 Minute, 32 Seconds.

**GENSER**  
Scientific Instruments GERMANY

# Sollwerteingabe

Powervap GUI

Set- and actual values

Variables	Actual values	Set values

Graphic

PVGui V7.6

Heating bath temperature (T) = [0;80]

45

1	2	3
4	5	6
7	8	9
Del	0	OK

Menu

Settings

Show help

Terminate PVGui

Errors

Automatic end procedure after:

0 Days 0 Hours 0 Minutes

Set automatic end procedure

Running time:

000 Days, 00 Hours, 02 Minutes, 18 Seconds.

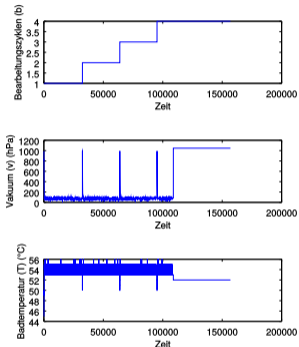
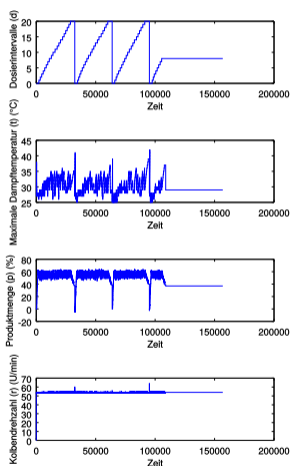
GENSER<sup>®</sup>  
Scientific Instruments GERMANY

3:52 Distillate pumped out or no Distillate removal.  
3:53 6. Pre-heating of bath  
4:30 Background test of the vacuum sensor S1.  
4:35 Background test of the inclinometer S5.  
4:44 Powervap successfully configured.  
4:44 7. Successfully completed  
4:51 Main operating window is open now.  
5:09 Set value has been changed: d = 7  
5:14 Set value has been changed: v = 25  
5:20 Set value has been changed: x = 36  
5:24 Set value has been changed: p = 40  
5:30 Set value has been changed: e = 20

# Inhalt

- ▶ Grafische Bedienoberfläche
- ▶ Messdatenanalyse
- ▶ Gerätebeispiele

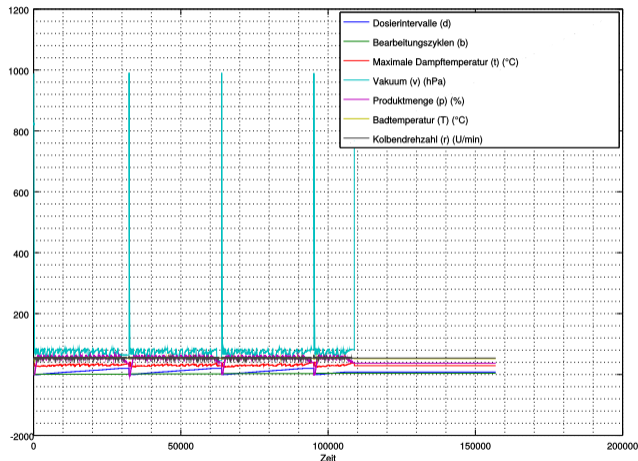
# Analyse aufgezeichneter Istwerte



Aufzeichnung der Variablen:  
Grafische und numerische  
Auswertung möglich

⇒ Optimierung  
bestehender Prozesse

# Darstellung mit Matlab, Octave, Excel etc.

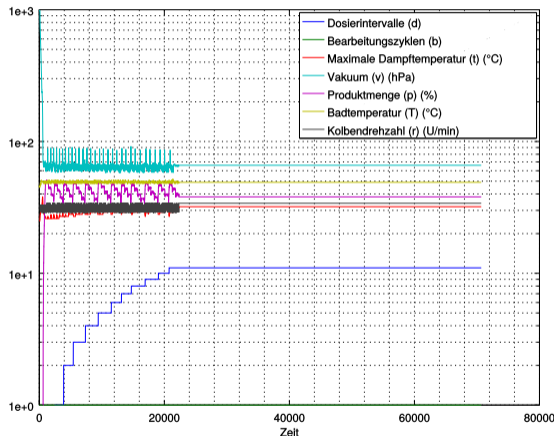


## Verwendung des CSV-Formats:

- ⇒ weltweit verbreitet
- ⇒ kompatibel mit z.B. Matlab, Octave, Excel



# Anwendungsbeispiel: Destillationsvorgang



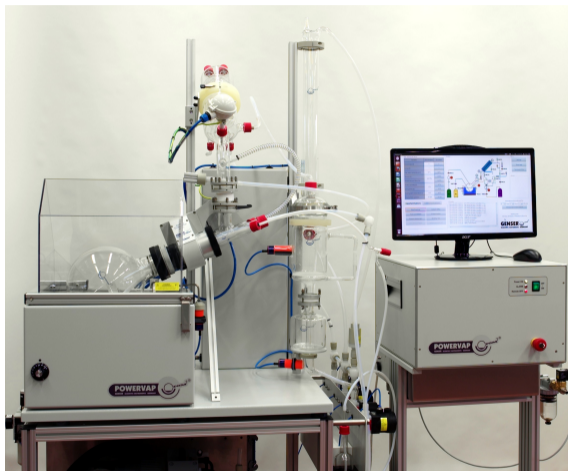
## Anhand von GNU Octave:

- ▶ kostenlos, frei verfügbar
- ▶ Plattform übergreifend erhältlich
- ⇒ anschauliche Betrachtung der Messgrößen mit einem Blick

# Inhalt

- ▶ Grafische Bedienoberfläche
- ▶ Messdatenanalyse
- ▶ Gerätebeispiele

# PV6-EX



# PV100-EX in Edelstahlausführung



Haben Sie noch Fragen? Bitte wenden Sie sich an

**GENSER<sup>®</sup>**   
**Scientific Instruments GERMANY**

Schweinsdorfer Straße 38  
91541 Rothenburg o. T.  
Germany

Phone + 49-(0)9861-4632  
Fax + 49-(0)9861-6432  
E-Mail [genser@t-online.de](mailto:genser@t-online.de)  
Web [www.rotary-evaporator.com](http://www.rotary-evaporator.com)